

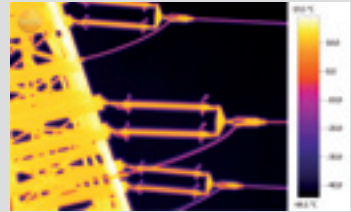
## **NEW!** testo 890 Thermal Imager

Highest resolution available, large display

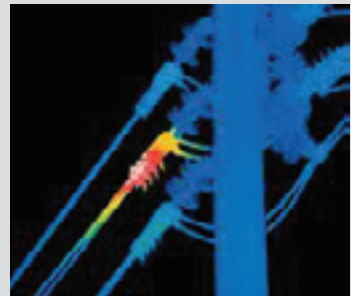
640 x 480 array and  
large touch screen



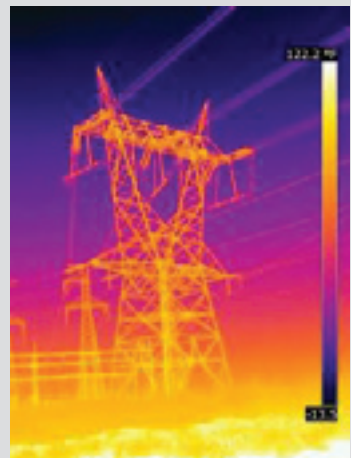
### VERSATILITY



Distance imaging



Detailed imaging



Interchangeable lenses

#### Highest available resolution and simple to use

The new testo 890 thermal imager has many of the features you look for in a simple, easy to use thermal imager. The 890 has the largest available array of any testo camera. Add this to the exclusive SuperResolution™ functionality and you can capture images up to 1280 x 960 pixels. This is the imager that finally has it all, high quality imaging with a comfort grip, well balanced for one hand operation and superior application versatility due to the large image array and interchangeable lenses.

#### Features

- 640 x 480 detector resolution
- SuperResolution™ compatible
- Surface moisture display
- One hand operation
- High temperature option
- Panorama image assistant™
- SiteRecognition™ technology
- Long life Li-ion battery

# NEW! testo 890 Thermal Imager

## Highest Image Quality: 640X 480 pixels

### Technical Data

	testo 890-1	testo 890-2
<b>Infrared image output</b>		
Detector type	FPA 640 x 480 pixels, a.Si	
Thermal sensitivity (NETD)	< 40 mK at 86 °F	
Field of view/min. focus distance	42° x 32° / 4" (standard lens) 15° x 11° / 19.68" (telephoto lens)	
Geometric resolution (IFOV)	1.15 mrad (standard lens), 0.42 mrad (telephoto lens)	
SuperResolution (pixel / IFOV) - optional in testo IRSoft software	1,280 x 960 pixels / 0.72 mrad (standard lens), 0.26 mrad (telephoto lens)	
Image refresh rate	33 Hz	
Focus	manual / auto	
Spectral range	8 to 14 µm	
<b>Image output visual</b>		
Image size / min. focus distance	3.1 MP / 19.68"	
<b>Image presentation</b>		
Image display	4.3" LCD touchscreen with 480 x 272 pixels	
Digital zoom	1x to 3x	
Display options	IR / real image	
Video output	USB 2.0	
Color palettes	8 (iron, rainbow, cold-hot, blue-red, grey, inverted grey, sepia, testo)	
<b>Measurement</b>		
Temperature range	-4° to 212 °F / 32° to 662 °F (switchable)	
High temperature measurement - optional	not applicable	662° to 2192 °F
Accuracy	±3.6 °F, ±2% of reading	
Emissivity / reflected temperature	0.01 to 1 / manual	
Transmission correction (atmosphere)	standard	
<b>Measuring functions</b>		
Display of surface moisture (via manual input)	not applicable	
Humidity measurement with wireless humidity probe (automatic measurement value transfer in real time)	not applicable	optional
Analysis functions	up to 3 measurement points, Hot/Cold Spot Recognition, Area measurement (Min/Max & average), Isotherm and alarm values	
Solar mode	Standard	

### Ordering Information

#### 890-1 Thermal Imager Kit: 0563 0890 71

Includes thermal imager, hard shell case, SD memory card, USB cable, software, and power supply.

#### 890-2 Thermal Imager Kit: 0563 0890 72

Includes thermal imager with site recognition feature, surface moisture display, voice recording Bluetooth headset, hard shell case, SD memory card, USB cable, software, and power supply.

#### 890-2 Deluxe Thermal Imager Kit: 0563 0890 73

Includes thermal imager with site recognition feature, telephoto lens, lens protection glass, additional battery, rapid battery charger, surface moisture display, voice recording Bluetooth headset, hard shell case, SD memory card, USB cable, software, and power supply.

testo, Inc. • (800) 227-0729

e-mail: [info@testo.com](mailto:info@testo.com) • [www.testousa.com/thermal](http://www.testousa.com/thermal)

Information subject to change without notice. 11TES866 12/11 2.5m

	testo 890-1	testo 890-2
<b>Imager equipment</b>		
Digital camera with power LEDs	standard	
Standard lens	42° x 32°	
Interchangeable lens - optional	not applicable	15° x 11°
SiteRecognition (measurement site recognition with image management)	not applicable	standard
Panorama image assistant	standard	
Voice recording	not applicable	Bluetooth / wired headset
Video measurement (via USB)	up to 3 measurement points	
Fully radiometric video measurement incl. logger function (via USB)	not applicable	optional
<b>Image storage</b>		
File format single image	.bmt; export options in .bmp, .jpg, .png, .csv, .xls	
File format video (via USB)	.wmv, .mpeg-1	.wmv, .mpeg-1 / Testo format (fully radiometric video)
Storage device	SD card 2 GB (800-1,000 images)	
<b>Power supply</b>		
Battery type	Fast-charging, Li-ion battery can be changed on-site	
Operating time	4.5 hours	
Charging options	in instrument/in charging station (optional)	
Power supply operation	Yes with Part No. 0554 8808 (rapid charger)	
<b>Ambient conditions</b>		
Operating temperature range	5° to 122 °F	
Storage temperature range	-22° to 140 °F	
Air humidity	20% to 80% non-condensing	
Housing protection class (IEC 60529)	IP 54	
Vibration (IEC 60068-2-6)	2G	
<b>Physical specifications</b>		
Weight	3.5 lbs	
Dimensions (L x W x H) in inches	9.9 x 5.1 x 4.3 in.	
Tripod mounting	1/4" - 20UNC	
Housing	ABS	
<b>PC software</b>		
System requirements	Windows XP (Service Pack 3), Windows Vista, Windows 7, Interface USB 2.0	
<b>Standards, tests, warranty</b>		
EU Directive	2004 / 108 / EC	
Warranty	2 years	

Distributor:

