

# Professional True RMS Industrial Multimeter

Built-in InfraRed Thermal Imager design quickly identifies hot spots without contact



EMC & LVD  
EN: 61326  
EN: 61010-1  
EN: 61010-02-032  
EN: 61010-02-033



จัดจำหน่ายโดย : บริษัท เฟเวอร์เทค จำกัด  
TEL : (02)8702884-5, (02)4289793-5  
Email: sales@evertech.co.th  
www.evertech.co.th



• TFT color LCD display  
• PC Calibration

• IP65 dust and water proof  
• True RMS

9889 Professional True RMS Industrial Digital Multimeter built-in Thermal Imager design, providing fast A/D converting sampling time, high accuracy, with datalogging and Trend Capture features. advanced system Platform permits smart multifunctions such as updating software on line, PC calibration etc.

Meterbox iMM software & cloud server support to transfer the measured data to the customer's smartphone for edit and storage.

### Safety Conformance

- EN61010-1 CAT IV 600V, CAT III 1000V
- 1000V input protection on all ranges
- 10A/1000V & 0.8A/1000V fuses protection on current ranges

### Features

- Built-in Thermal Imager design quickly identifies hot spots without contact
- 240 x 320 2.8" TFT color LCD display
- Large LCD display 6000 counts
- Logging function with Trend Capture for easy review of logged data
- Low pass filter for accurate measurement of variable frequency drive (VFD) signals
- Long work time with li-ion battery
- AC, AC+DC true-RMS measurements & 1kHz ACV, ACA bandwidth
- A/D convert fast sampling time: 10 Times/sec.
- Peak capture (records transients as fast as 500µs)
- Min/Max/Average with Time stamp (records signal fluctuations)
- 80x80 Infrared resolution
- Bluetooth BLE instant share function
- Easy to view and analyze images quickly

### Specifications

Thermal Imager			
IR resolution	80x80 pixels		
Field of View (FOV)	21° x 21°		
Thermal sensitivity/NETD	< 0.08°C /80mK		
Image frequency	50Hz		
Object temperature range	range: -20 to 260°C (-4 to 500°F)		
Spectral range	8-14 µm		
Color palettes	IRON/Rainbow/Grey/Grey Inverted		
Accuracy	±2°C (±3.6°F) or ±2% of reading		
True RMS Multimeter Functions			
Function	Maximum	Max, resolution	Accuracy
Voltage DC	1000V	100mV	±(0.1% + 3)
Voltage AC	1000V	100mV	±(0.9% + 20)
Current DC	10A	0.1µA	±(0.9% + 2)
Current AC	10A	0.1µA	±(1.2% + 5)
Resistance	60MΩ	0.1Ω	±(1.0% + 2)
Capacitance	6000uF	0.01nF	±(2.5% + 5)
Frequency	10MHz	0.01Hz	±(0.5% + 1)
Diode and Continuity	Yes		
PC Interface	Bluetooth		
Power Supply	8 hours Li-ion rechargeable battery;AC Adaptor/charger		

Size(HxWxD): 195mm x 80mm x 58mm Weight: 540g

### Accessories:

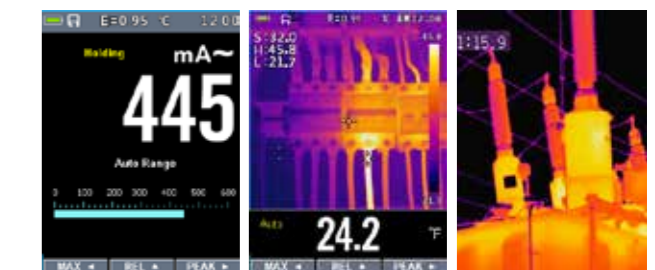
Test leads, Li-ion batteries, Type K temperature probe, Software, gift box with carrying case.



EMC & LVD  
EN: 61326  
EN: 61010-1  
EN: 61010-02-032  
EN: 61010-02-033



Model 9889



IP65 Dust and Water Proof.  
2m drop protection, IP65 dust and waterproof extend its service life.