

# pH /Temperature meter



8687



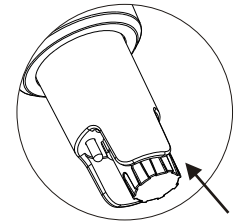
8688



8689

## Detachable pH pen 8687/8688/8689

- ▲ Big LCD dual display
- ▲ IP65 water proof
- ▲ pH/ temperature dual display
- ▲ Electrode status indication
- ▲ Easy electrode replacement
- ▲ Stability indicator
- ▲ One touch auto-calibration up to 3 points
- ▲ Calibration values are adjustable
- ▲ 20 mins auto power off
- ▲ Simple sleep mode disable operation
- ▲ Data hold function
- ▲ Battery low indicator
- ▲ Temperature unit selectable
- ▲ Cap to keep sensor wet & last life time



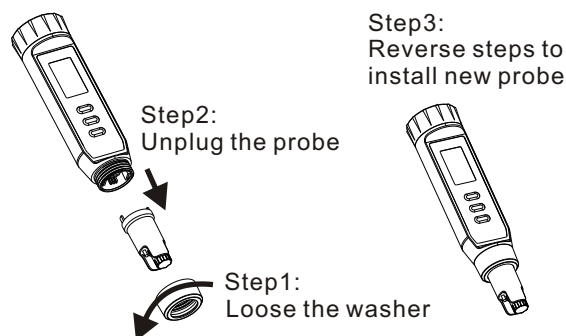
SENSOR PROTECTION CAP

	8687	8688	8689
pH range	2.0~12.0	0.0~14.0	0.00~14.00
pH accuracy	+/-0.3	+/-0.2	+/-0.05
pH resolution	0.1	0.1	0.01
Temp. range	0~50.0°C	0~50.0°C	0~50.0°C
Temp. accuracy	+/-1°C	+/-1°C	+/-0.5°C
Temp. resolution	0.1	0.1	0.1
ATC	ATC	ATC	ATC
LCD size	30(H)x18(W)mm		
Operating temp.	0~60°C		
Operating RH%	Humidity<80%		
Storage temp.	0~60°C		
Storage RH%	Humidity < 90%		
Sensor life time	>6 months (with good maintenance)		
Dimension	176(L)x39(W)x39(H)mm		
Weight	110g		
Battery	LR44 x 4pcs		
Optional	Detachable pH electrode		
Standard Package	Meter/Battery/Manual/Wrist strap/Paper box		

### 3 steps to replace probe:



Aquarium



### Optional:



**PH ELECTRODE**  
FOR 8687/8688/8689  
P/N: VZ86P8AZ