

EARTH RESISTANCE CLAMP METER MS2301

MS2301

RESISTANCE
0.01~1200Ω

CURRENT
0.1mA~20A



EMC
LVD



Specifications

MS2301

Specifications	Range	Resolution	Accuracy
Measuring Resistance	0.01 Ω~0.999Ω	0.001 Ω	±(1.5%+0.01)
	1 Ω~9.99Ω	0.01 Ω	±(1.5%+0.1)
	10 Ω~99.9Ω	0.1 Ω	±(2.0%+0.3)
	100Ω~199.9Ω	1 Ω	±(3.0%+1)
	200Ω~400Ω	5 Ω	±(6.0%+5)
	400Ω~600Ω	10 Ω	±(10%+10)
Measuring Current	600Ω~1200Ω	20 Ω	±(20%+20)
	100mA	0.1 mA	±(2.5%+1)
	300mA	0.3 mA	±(2.5%+2)
	1A	0.001 A	±(2.5%+0.003)
	3A	0.003 A	±(2.5%+0.01)
	10A	0.01 A	±(2.5%+0.03)
	20A	0.03 A	±(2.5%+0.05)

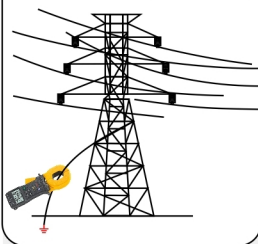
Features

Display	counts	9999
Jaw Opening	45mm×32mm/1.8"×1.3"	●
Auto Ranging	Auto & Manual	●
APO	Auto Power Off	●
Test Voltage	3700V	●
Logging and Recall	99 groups	●
Alarm Limit Setting	Setting Alarm Threshold in 1~100Ω	●
LBD	Low Battery Display	●
Buzzer ON Symbol		●
Data Hold		●

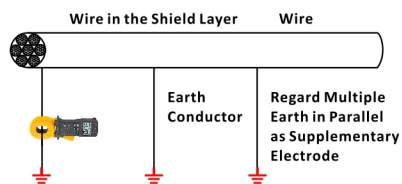
General

Power Supply	1×9V ALKALINE Battery
Product Size	276mm×104mm×54mm/10.8"×4.33"×2.1"
Product Weight	1050g/2.31lb
Safety Rating	CE ETL CAT III 600V RoHS

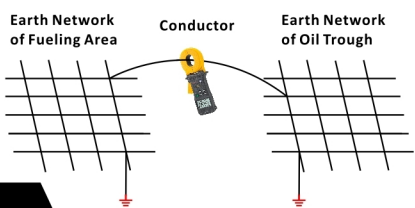
Testing Transmit Electricity Circuitry



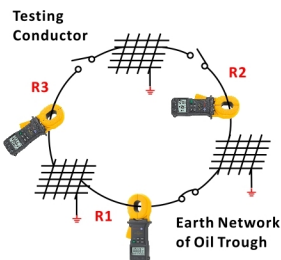
Application of the Telecommunication



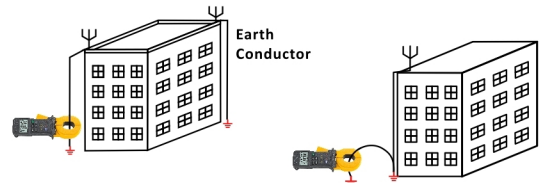
Application of Petrochemical System



Electric Power Maintain of The Factory



Testing Earth Resistance of Lighting Rod



Application of FARADAY-GAGE Protect System

