

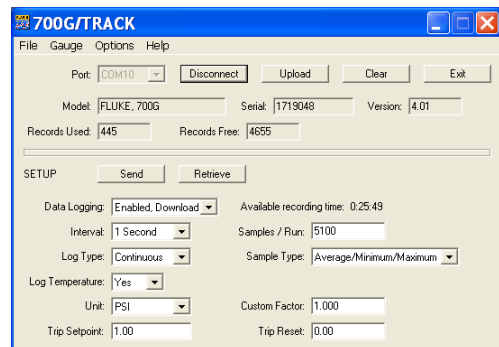
## Fluke 700G Series Precision Pressure Test Gauges

### Technical Data



#### Features

- Precision pressure measurement from  $\pm 10$  inH<sub>2</sub>O/20 mbar to 10,000 psi/690 bar
- Absolute pressure measurement ranges 15, 30, 100, 300 psia
- Accuracy to 0.05 % of full scale
- Reference class gauge accuracies to 0.04 % of reading
- Easy to use, rugged construction for reliable performance
- CSA; Class 1, Div 2, Groups A-D rating
- ATEX rating: II 3 G Ex nA IIB T6
- Combine with the 700PTPK or 700HTPK pump kits for a complete pressure testing solution for up to 600 psi (40 bar) with the PTP-1 pneumatic pump and up to 10,000 psi (690 bar) with the HTP-2 hydraulic pump
- Log up to 8,493 pressure measurements to memory (requires 700G/TRACK software)
- Three-year warranty



#### Fluke-700PTPK Pneumatic Test Kit

- Combine with any Fluke-700G Series Gauge, 1,000 psi (69 bar) or less, to make a complete pressure testing kit
- Generate pressure up to 600 psi, 40 bar with the 700PTP-1 test pump
- Connect the 700G Series gauge directly to the included PTP-1 hand pump
- Includes hoses and adapters for connecting to the pressure device to be tested
- Hard case protects pump and gauge and allows gauge to remain connected to the pump

#### Fluke-700HTPK Hydraulic Test Kit

- Combine with any Fluke-700G Series Gauge, 1,000 psi (69 bar) range or greater, to make a complete pressure testing kit
- Generate pressure up to 10,000 psi, 690 bar with the included 700HTP-2 test pump
- Connect the 700G Series gauge directly to the HTP-2 hand pump
- Includes 700HTH-1 hose kit and adapters for connecting to the pressure device to be tested
- Hard case protects pump and gauge and allows gauge to remain connected to the pump

#### 700G/TRACK Logging Software

- Use with 700G Series gauges to perform real time data logging to a PC
- Download logging configurations to the 700G Series gauges for a remote logging event
- Configure logging event reading rate, duration and measurement units
- Upload measurements logged remotely and display or export measurements
- Includes communication cable for connection to a PC

## Specifications

| Model  | Range  | Resolution                             | Accuracy   | Burst pressure        |
|--|--|--|--|-----------------------|
| Fluke-700G01   | -10 to +10 inH <sub>2</sub> O<br>-20 mbar to 20 mbar | 0.001 inH <sub>2</sub> O<br>0.001 mbar | Positive pressure<br>± 0.1 % of range,<br>Vacuum<br>± 0.1 % of range                         | 3 psi<br>210 mbar     |
| Fluke-700G02   | -1 to +1 psi<br>-70 mbar to 70 mbar                  | 0.0001 psi<br>0.001 mbar               |  | 5 psi<br>350 mbar     |
| Fluke-700G04   | -14 psi to 15 psi<br>-.97 bar to 1 bar               | 0.001 psi<br>0.0001 bar                | Positive pressure<br>± 0.05 % FS<br>Vacuum<br>± 0.1 % FS                                     | 60 psi<br>4 bar       |
| Fluke-700G05   | -14 psi to 30 psi<br>-.97 bar to 2 bar               | 0.001 psi<br>0.0001 bar                |  | 120 psi<br>8 bar      |
| Fluke-700G06   | -12 psi to 100 psi<br>-.83 bar to 6.9 bar            | 0.01 psi<br>0.0001 bar                 |  | 400 psi<br>26 bar     |
| Fluke-700G27   | -12 psi to 300 psi<br>-.83 bar to 20 bar             | 0.01 psi<br>0.001 bar                  |  | 1200 psi<br>80 bar    |
| Fluke-700G07   | -12 psi to 500 psi<br>-.83 bar to 34 bar             | 0.01 psi<br>0.001 bar                  |  | 2000 psi<br>138 bar   |
| Fluke-700G08   | -14 psi to 1000 psi<br>-.97 bar to 69 bar            | 0.1 psi<br>0.001 bar                   |  | 4000 psi<br>266 bar   |
| Fluke-700G10   | -14 to 2000 psi<br>-.97 bar to 140 bar               | 0.1 psi<br>0.01 bar                    |  | 8000 psi<br>550 bar   |
| Fluke-700G29   | -14 psi to 3000 psi<br>-.97 bar to 200 bar           | 0.1 psi<br>0.01 bar                    |  | 10000 psi<br>690 bar  |
| Fluke-700G30   | -14 psi to 5000 psi<br>-.97 bar to 340 bar           | 0.1 psi<br>0.01 bar                    |  | 10000 psi<br>690 bar  |
| Fluke-700G31   | -14 psi to 10000 psi<br>-.97 bar to 690 bar          | 1 psi<br>0.01 bar                      |  | 20000 psi<br>1035 bar |
| Fluke-700GA4   | 0 to 15 psia<br>0 to 1 bar absolute                  | 0.001 psi<br>0.0001 bar                | ± 0.05 % of range  | 60 psi<br>4 bar       |
| Fluke-700GA5   | 0 to 30 psia<br>0 to 2 bar absolute                  | 0.001 psi<br>0.0001 bar                |  | 120 psi<br>8 bar      |
| Fluke-700GA6   | 0 to 100 psia<br>0 to 6.9 bar absolute               | 0.01 psi<br>0.0001 bar                 |  | 400 psi<br>27 bar     |
| Fluke-700GA27  | 0 to 300 psia<br>0 to 20 bar absolute                | 0.01 psi<br>0.001 bar                  |  | 1200 psi<br>80 bar    |
| Fluke-700RG05  | -14 to +30 psi<br>-0.97 to +2 bar                    | 0.001 psi<br>0.0001 bar                | Positive pressure,<br>± 0.04 % of reading<br>+.01 % of range,<br>Vacuum<br>± 0.05 % of range | 90 psi<br>6 bar       |
| Fluke-700RG06  | -12 to 100 psi<br>-0.83 to 6.9 bar                   | 0.01 psi<br>0.0001 bar                 | Positive pressure,<br>± 0.04 % of reading<br>+.01 % of range,<br>Vacuum<br>± 0.1 % of range  | 400 psi<br>27 bar     |
| Fluke-700RG07  | -12 to 500 psi<br>-0.83 to 34                        | 0.01 psi<br>0.001 bar                  |  | 2000 psi<br>138 bar   |
| Fluke-700RG08  | -14 to 1000 psi<br>-0.97 to 69 bar                   | 0.1 psi<br>0.001 bar                   |  | 4000 psi<br>275 bar   |
| Fluke-700RG29  | -14 to 3000 psi<br>-0.97 to 200 bar                  | 0.1 psi<br>0.01 bar                    |  | 10000 psi<br>690 bar  |
| Fluke-700RG30  | -14 to 5000 psi<br>-0.97 to 340 bar                  | 0.1 psi<br>0.01 bar                    |  | 15000 psi<br>1035 bar |
| Fluke-700RG31  | -14 to 10000 psi<br>-0.97 to 690 bar                 | 1 psi<br>0.01 bar                      |  | 20000 psi<br>1380 bar |
| 700R Ranges: Temperature Compensation 0 e°C to 50 °C (32 °F to 122 °F) to rated accuracy.<br>For temperatures from -10 °C to 0 °C and 50 °C to 55 °C, add .005 % FS/°C   |  |  |  |                       |
| <b>Media compatibility</b>   |  |  |  |                       |
| <ul style="list-style-type: none"> <li>• 10 inH<sub>2</sub>O, 1, 15, 30 psi: any clean dry non-corrosive gas</li> <li>• 100, 300, 500, 1000 psi: any liquids or gases compatible with 316 stainless steel and above 1000 psi: any non-flammable, non-toxic, non-explosive, non-oxidizing liquid or gas compatible with 316 stainless steel.</li> </ul> |  |  |  |                       |

| <b>Mechanical specifications</b> |  |
|----------------------------------|--|
| Dimensions (HxWxD)               | 12.7 cm x 11.4 cm x 3.7 cm (5in x 4.5in x 1.5in)                               |
| Pressure connection              | ¼ in NPT Male  |
| Housing/Weight                   | Cast ZNAl 0.56 kg (1.22 lb) with holster                                       |
| Display                          | 5 ½ digits, 16.53 mm (0.65 in) high 20-segment bar graph, 0 to 100%            |
| Power                            | Three AA alkaline batteries  |
| Battery life                     | 1,500 hours without backlight (continuous on), 2,000 hours at slow sample rate |

## Ordering information

|                      |  |
|----------------------|--|
| <b>Fluke-700G01</b>  | Pressure Gauge, ±10 inH <sub>2</sub> O WC (0.4 PSIG) |
| <b>Fluke-700G02</b>  | Pressure Gauge, ±30 inH <sub>2</sub> O WC (1 PSIG)   |
| <b>Fluke-700G04</b>  | Pressure Gauge, ± 15 PSIG                            |
| <b>Fluke-700G05</b>  | Pressure Gauge, 30 PSIG                              |
| <b>Fluke-700G06</b>  | Pressure Gauge, 100 PSIG                             |
| <b>Fluke-700G27</b>  | Pressure Gauge, 300 PSIG                             |
| <b>Fluke-700G07</b>  | Pressure Gauge, 500 PSIG                             |
| <b>Fluke-700G08</b>  | Pressure Gauge, 1000 PSIG                            |
| <b>Fluke-700G10</b>  | Pressure Gauge, 2000 PSIG                            |
| <b>Fluke-700G29</b>  | Pressure Gauge, 3000 PSIG                            |
| <b>Fluke-700G30</b>  | Pressure Gauge, 5000 PSIG                            |
| <b>Fluke-700G31</b>  | Pressure Gauge, 10000 PSIG                           |
| <b>Fluke-700GA4</b>  | Pressure Gauge, 15 PSIA                              |
| <b>Fluke-700GA5</b>  | Pressure Gauge, 30 PSIA                              |
| <b>Fluke-700GA6</b>  | Pressure Gauge, 100 PSIA                             |
| <b>Fluke-700GA27</b> | Pressure Gauge, 300 PSIA                             |
| <b>Fluke-700RG05</b> | Pressure Gauge, Reference, 30 PSIG                   |
| <b>Fluke-700RG06</b> | Pressure Gauge, Reference, 100 PSIG                  |
| <b>Fluke-700RG07</b> | Pressure Gauge, Reference, 500 PSIG                  |
| <b>Fluke-700RG08</b> | Pressure Gauge, Reference, 1000 PSIG                 |
| <b>Fluke-700RG29</b> | Pressure Gauge, Reference, 3000 PSIG                 |
| <b>Fluke-700RG30</b> | Pressure Gauge, Reference, 5000 PSIG                 |
| <b>Fluke-700RG31</b> | Pressure Gauge, Reference, 10000 PSIG                |
| <b>700G/TRACK</b>    | Data logging software and cable                      |
| <b>Fluke-700HTPK</b> | Hydraulic test pump kit, 0 to 10000 PSI/690 BAR      |
| <b>Fluke-700PTPK</b> | Pneumatic test pump kit, 0 to 600 PSI/40 BAR         |

### Included accessories (Gauges)

Manual on CD-ROM in 14 languages  
 Traceable certificate of calibration  
 1/4" NPT to 1/4" ISO adapter

**Fluke.** *The Most Trusted Tools in the World.*

**Fluke Corporation**  
 PO Box 9090, Everett, WA 98206 U.S.A.

**Fluke Europe B.V.**  
 PO Box 1186, 5602 BD  
 Eindhoven, The Netherlands

**For more information call:**  
 In the U.S.A. (800) 443-5853 or  
 Fax (425) 446-5116  
 In Europe/M-East/Africa +31 (0) 40 2675 200 or  
 Fax +31 (0) 40 2675 222  
 In Canada (800)-36-FLUKE or  
 Fax (905) 890-6866  
 From other countries +1 (425) 446-5500 or  
 Fax +1 (425) 446-5116  
 Web access: <http://www.fluke.com>

©2013 Fluke Corporation.  
 Specifications subject to change without notice.  
 Printed in U.S.A. 6/2013 4131179B\_EN  
 Pub\_ID: 11885-eng

**Modification of this document is not permitted without written permission from Fluke Corporation.**